

# VEGAMET 625

## Signal conditioning instrument for continuous measurement



### Application area

VEGAMET 625 is a universal signal conditioning instrument for a number of control tasks such as level, gauge, interface, differential and process pressure measurement. Inventory management, VMI (Vendor Managed Inventory) and remote enquiry are further application possibilities. Comprehensive adjustment functions allow individual adaptation to the respective application.

### Advantages

- 2 x HART sensor input with transmitter power supply
- Three relay outputs, three scalable current outputs
- Lighted, graphic-capable LC display
- Comprehensive adjustment functions, e.g. scaling, linearisation
- Integrated webserver
- Measured value and message transmission via e-mail
- Suitable for data exchange with WEB-VV

### Function

The VEGAMET 625 signal conditioning instrument powers two HART sensors and processes their measured values. Through an adjustment on the VEGAMET, these measured values can be individually scaled/linearised and transferred to downstream systems via the current outputs. Beside the graphic-capable indication there are three operating relays that serve as limit alarms for control tasks.

With instruments with optional interface, measured values can be retrieved via modem or network and indicated with the aid of a web browser or WEB-VV. In addition, it is possible to send a measured value or message via e-mail.

### Technical data

Series	Module unit with plug-in socket for mounting on carrier rail 35 x 7.5 (EN 50022)
Connection terminals	
– Type of terminal	Screw terminal
– Max. wire cross-section	1.5 mm <sup>2</sup> (AWG 16)
Operating voltage	20 ... 253 V AC, 50/60 Hz, 20 ... 253 V DC
Max. power consumption	12 VA; 7.5 W

### Sensor input

Number of sensors	2 x VEGA HART sensors
Type of input (selectable)	
– Active input	Sensor power supply by VEGAMET 625
– Passive input	Sensor has own power supply
Measured value transmission	
– HART multidrop protocol	digital for VEGA HART sensors

### Relay outputs

Quantity	3 x operating relay, 1 x fail safe relay
Turn-on voltage	min. 10 mV DC, max. 250 V AC/DC
Switching current	min. 10 µA DC, max. 3 A AC, 1 A DC
Breaking capacity	min. 50 mW, max. 750 VA, max. 40 W DC (with U less than 40 V)

### Current outputs

Quantity	3 x outputs
Range	0/4 ... 20 mA, 20 ... 0/4 mA
Max. load	500 Ω

### Ethernet interface (optional)

Quantity	1 x, cannot be combined with RS232
Data transmission	10/100 Mbit

### RS232 interface (optional)

Quantity	1 x, cannot be combined with Ethernet
----------	---------------------------------------

### Measured value indication

– graphic-capable LC display (50 x 25 mm), lighting	digital and quasianalogue indication
– Max. indicating range	-99999 ... 99999

### LED displays

– Status operating voltage	1 x LED green
– Status fault signal	1 x LED red
– Status operating relay 1/2/3	3 x LED yellow
– Status interface	1 x LED green

Ambient temperature	-20 ... +60 °C (-4 ... +140 °F)
---------------------	---------------------------------

### Protection rating

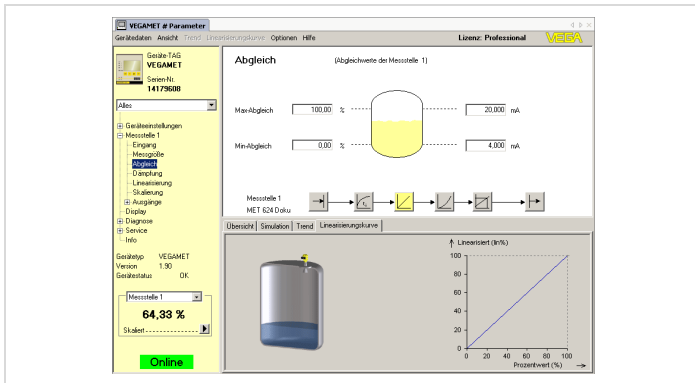
– Instrument	IP 30
– Terminal socket	IP 20

### Approvals

You can find detailed information on the existing approvals in the "configurator" on our homepage under [www.vega.com/configurator](http://www.vega.com/configurator).

## Operation

The adjustment of VEGAMET 625 is menu-driven via four keys in the front and a clear, graphic-capable LC display with background lighting. As an alternative, parameter adjustment of the instrument is also possible via the adjustment software PACTware and the respective DTM.



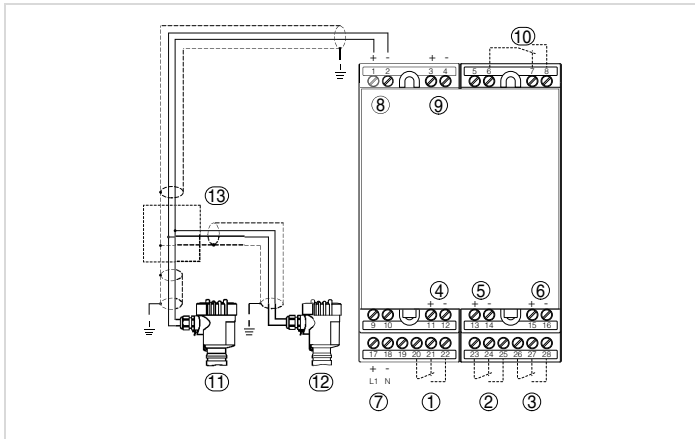
## Information

You can find further information about the VEGA product line on our homepage [www.vega.com](http://www.vega.com). You can find free-of-charge operating instructions, product information, brochures, approval documents, instrument drawings, etc. in the download section under [www.vega.com/downloads](http://www.vega.com/downloads).

## Contact

You can find the VEGA agency serving your area on our homepage [www.vega.com](http://www.vega.com).

## Electrical connection



Connection VEGAMET 625 with two-wire sensors

- 1 Internal operating relay 1
- 2 Internal operating relay 2
- 3 Internal operating relay 3
- 4 Internal current output 1
- 5 Internal current output 2
- 6 Internal current output 3
- 7 Voltage supply of VEGAMET 625
- 8 Measurement data input with sensor supply (active input)
- 9 Measurement data input (passive input), not in Ex ia
- 10 Internal fail safe relay
- 11 HART two-wire sensor with Multidrop address 1
- 12 HART two-wire sensor with Multidrop address 2
- 13 Distributor

You can find details on the electrical connection in the operating instructions of the instruments on our homepage under [www.vega.com/downloads](http://www.vega.com/downloads).

## Dimensions

