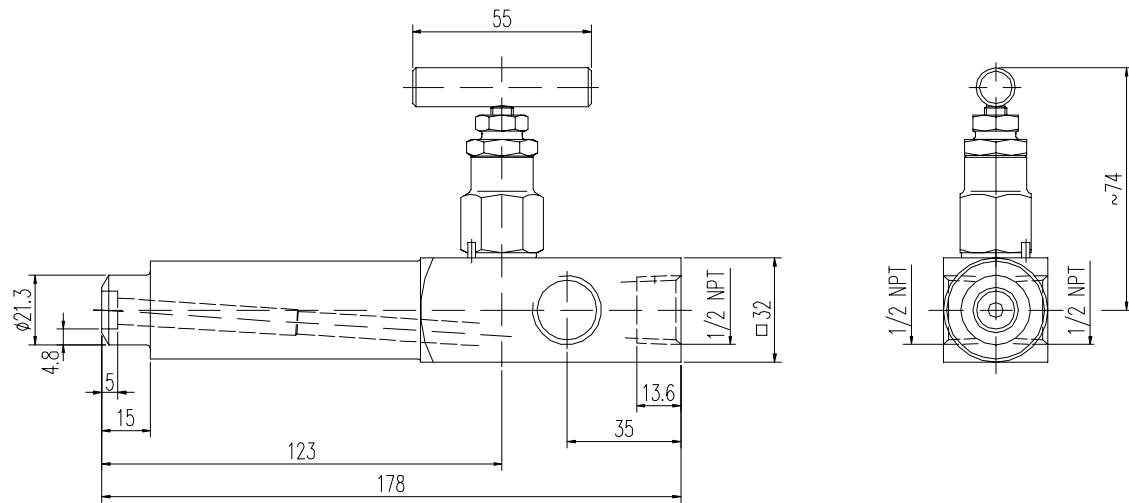
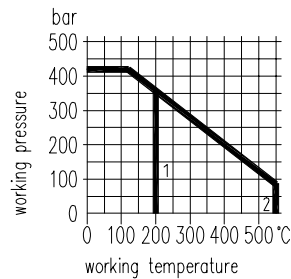
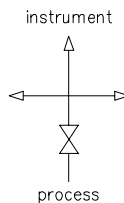
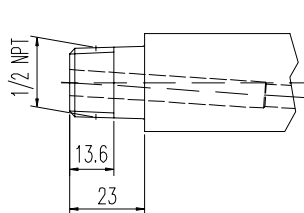


**Type 1**

**Type 2**


1 PTFE packing  
2 graphite packing

**MOUNTING ACCESSORIES see section 8**

Type	Material	Connections		Packing	Part no.
		Inlet	3 Outlets		
1	st. st.	weld end O. D. 21,3 x 4,8 mm	1/2 NPT female	PTFE	N354.17.427.01
				graphite	N354.17.427.0120
2	st. st.	1/2 NPT male	1/2 NPT female	PTFE	N354.17.427.02
				graphite	N354.17.427.0220

Components	Stainless steel <sup>1)</sup>	
	DIN - Material Number	
Body <sup>2)</sup>	1.4404 / 316L	
Bonnet	1.4401 / 316	
Valve stem	1.4404 / 316L	
Needle tip <sup>3)</sup>	1.4571	
Packing	PTFE up to 200°C	graphite up to 550°C
Gland nut	1.4301	
T-handle	stainless steel	

- Working pressure up to 700 bar (10.000 psi) on request
- External stem thread
- Stem with cold rolled surface, back seat and non-rotating needle tip
- Special types are available on request
- The valves can be supplied according to NACE-standard

**On request:**

- Anti-tamper facility
- Padlocking facility

- 1) Can also be supplied for oxygen service. Please notice order instruction B 3!
- 2) Available with inspection certificate 3.1 acc. to EN 10 204
- 3) Also available with soft tip in KEL-F® (PCTFE) or POM