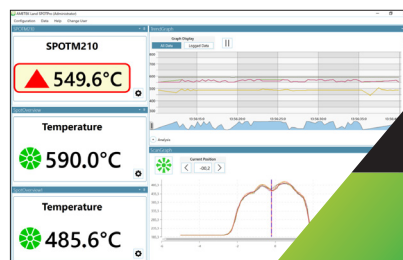


SPOTVIEWER SPOTPRO

SPOT PYROMETER ADVANCED
MONITORING AND ANALYSING
SOFTWARE



MEMBER OF THE SPOT PYROMETER FAMILY



LAND
AMETEK[®]
PROCESS & ANALYTICAL INSTRUMENTS



QUALITY CUSTOMER SOLUTIONS

SPOTVIEWER SPOTPRO

AMETEK LAND HAS BEEN MANUFACTURING PRECISION MEASURING EQUIPMENT SINCE 1947.

WE ARE SPECIALISTS IN NON-CONTACT TEMPERATURE MEASUREMENT AND COMBUSTION MONITORING WITH APPLICATIONS ACROSS DIVERSE INDUSTRIES SUCH AS STEEL AND GLASS MAKING, POWER GENERATION AND CEMENT MANUFACTURE.

As part of AMETEK Process & Analytical Instruments Division since 2006, our customers benefit from the worldwide AMETEK sales and service team.

SPOTViewer is a PC-based utility that enables you to connect, configure, and view data from one SPOT pyrometer and scan graphs with an Actuator. Specifically developed to work seamlessly with the latest generation of industry-leading single point pyrometers, SPOTViewer's simple installation means the operator can quickly connect, configure and view data from any AMETEK Land SPOT pyrometer.

- DATA LOGGING
- ALARM VISUALISATION
- DATA TRENDING/ANALYSIS
- TEMPERATURE MONITORING
- SETTING MANAGEMENT

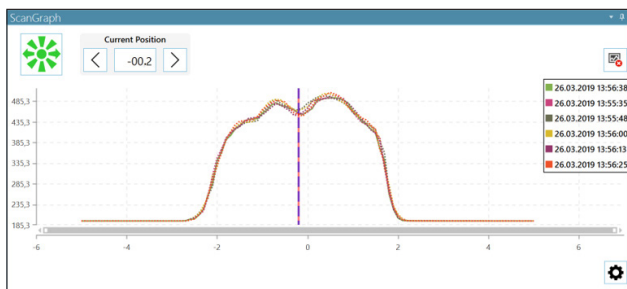
Easy view and analysis of long term data displayed in both graphical, tabular and numeric views. Clearly highlights trends and patterns allowing you a greater understanding of the temperatures involved in your process.

Simple configuration of pyrometer and actuator settings from a remote location gives you total control over temperature measurement on your process without the need to be at the instrument location.

SPOTViewer enables a user to remotely control a SPOT Actuator and its settings, plus displays scan graphs.

SCAN GRAPH VIEW

- Trigger an Actuator scan directly from within the SPOTViewer.
- Control the Actuator position using the buttons or by clicking on the graph.
- See the temperature readings of up to 6 previous Actuator scans.
- View the current Actuator position and the last detected hot spot on the graph.



TREND VIEW

Provides a view of live and logged temperature trend data in as fast as 1 ms (model dependent). A cursor provides detailed information about each data point.

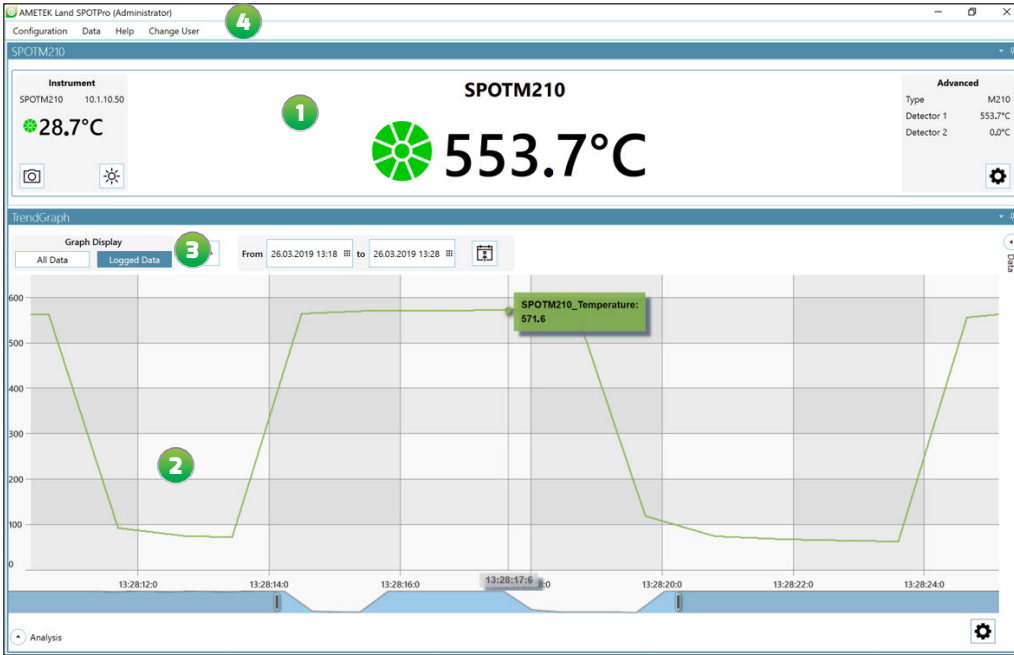
- **All Data Mode:** Displays a trend of all temperature data from the instrument. Pause the graph display to further analyse the visible data by panning and zooming.
- **Logged Data Mode:** This mode allows the user to view the data currently being logged to file. Pause the display to view historically logged data by selecting the date range to analyse.



- **Trend Analysis:** For each temperature trend in the view, statistical analysis is performed to calculate the minimum, average, maximum value, and rate of change.

WHAT IS SPOTVIEWER?

There are four key features of the SPOTViewer interface.



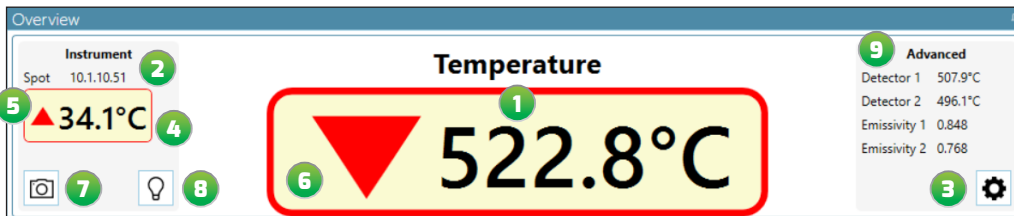
1: THE INSTRUMENT OVERVIEW shows the current temperature reading from the pyrometer. Increase the size of the view to show temperatures in a larger font size. This view allows you to take a snapshot image of the target being viewed by the pyrometer camera.

2: THE TREND VIEW gives a graphical trace of temperature readings, also in date/time order. View logged data in a grid view by expanding the data tab.

3: THE SCAN GRAPH shows the temperature profile read during the last scan using an Actuator.

4: THE MENU BAR provides access to additional options such as data logging and file storage settings, help and language selection.

INSTRUMENT OVERVIEW



1: TARGET TEMPERATURE DISPLAY
Live temperature display.

2: IP ADDRESS
Displays the instrument's IP address.

3: DISPLAY SETTING BUTTON
Changes the display settings for this view, allowing you to alter what's displayed on screen.

4: INSTRUMENT TEMPERATURE DISPLAY
Indicates the sensor's own ambient temperature.

5: INSTRUMENT TEMPERATURE ALARM STATUS
The state of the instrument temperature alarm is indicated by the frame around the temperature turning red and either an upward (exceeds maximum) or downward (below minimum) arrow.

6: TARGET TEMPERATURE ALARM STATUS
The state of the user settable target temperature alarm is indicated by the large arrow, pointing either upward (above set point) or downward (below set point).

7: IMAGE CAPTURE BUTTON
When pressed, will capture and display a JPG image from the pyrometer viewfinder (lensed models only).

8: SPOT LED BUTTON
Turn on and off the LED of the SPOT device.

9: ADVANCED DISPLAY
Current detector readings and emissivity output from supported SPOT devices.

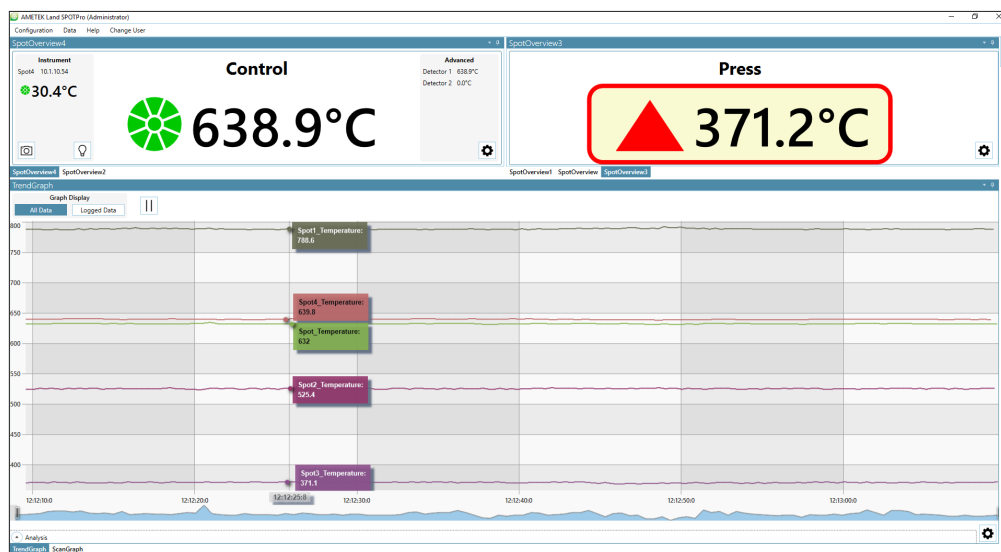
SPOTVIEWER SPOTPRO

WHAT IS SPOTPRO?

SPOTPro, an advanced software utility, provides a single control point to configure, store and view data for up to 40 SPOT infrared pyrometers.

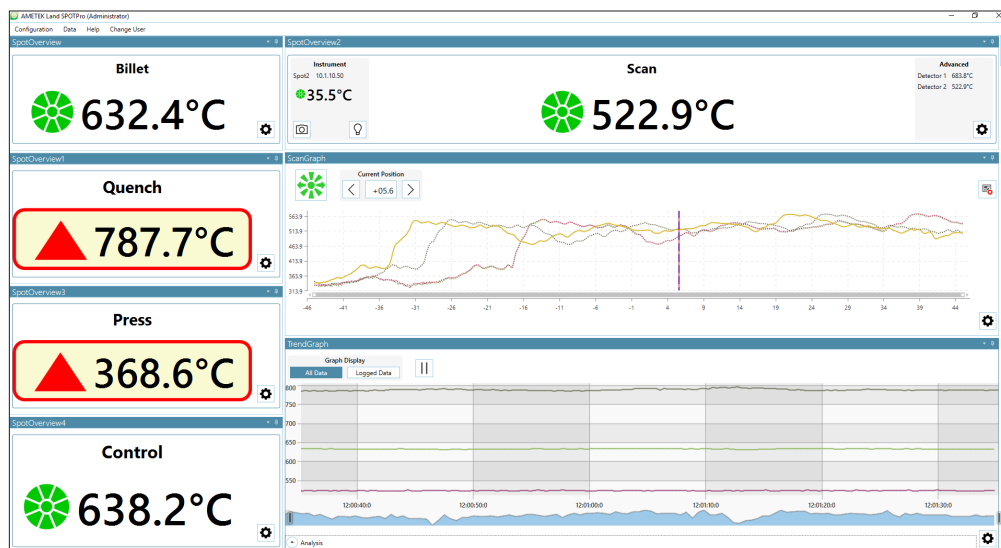
CONTROL MULTIPLE SPOT PYROMETERS

Giving a complete overview of all the SPOT pyrometers connected to your network, SPOTPro allows you to independently configure data logging for each thermometer, by setting automatic triggers for data storage. This allows customised criteria to be set for data measurements during important events.



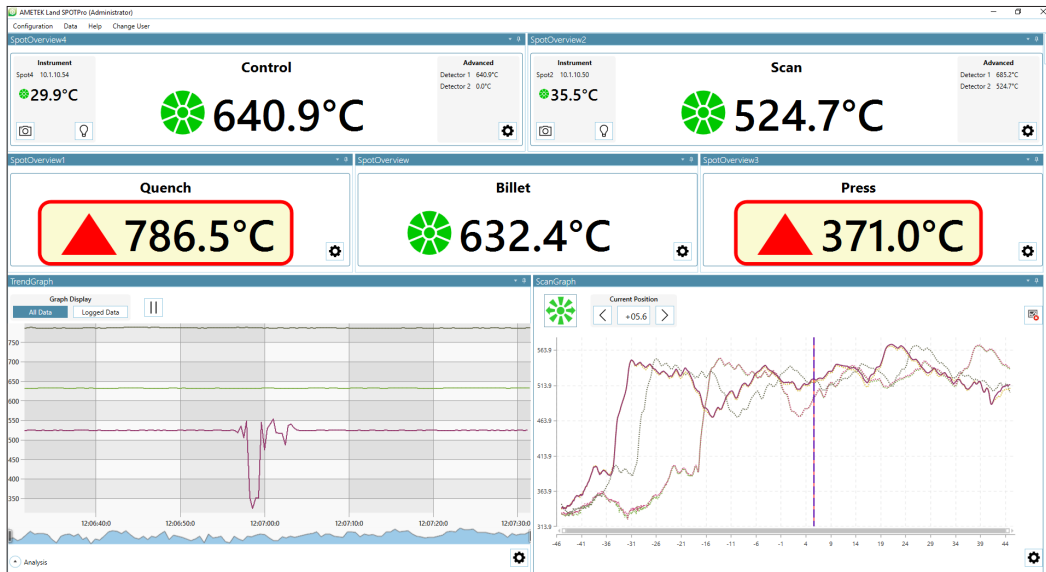
FLEXIBLE USER INTERFACE

SPOTPro supports a flexible window layout with multiple monitor support - see all the data that is most important to you prominently on screen at once.



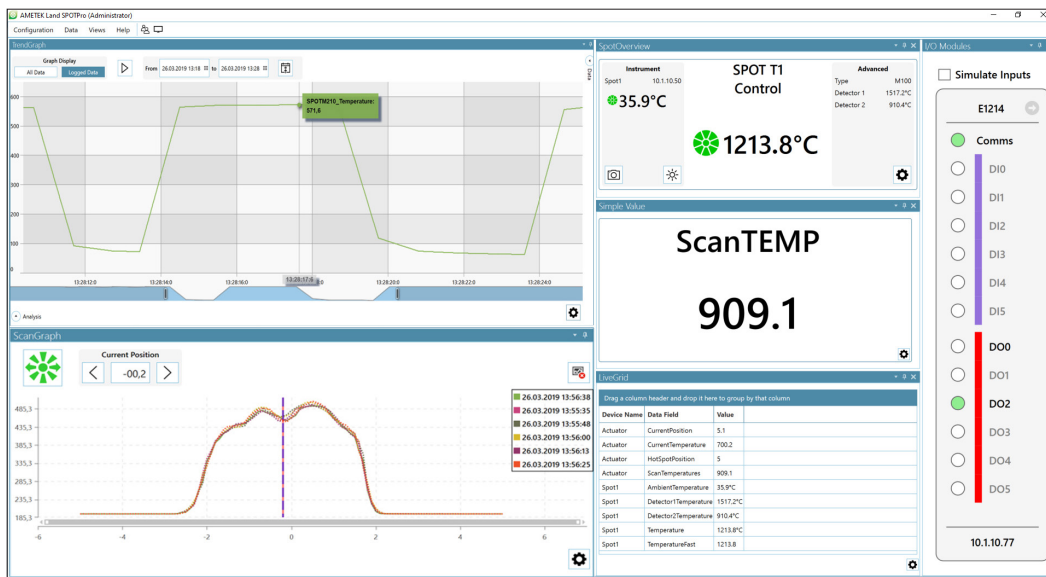
RICHER DATA ANALYSIS

SPOTPro allows users to compare live and historical data to trend and diagnose process issues. Switching between live and historical data enables a comprehensive review and analysis of your measurements. Data can be logged to a SQLite database for easy configuration or an MS SQL Server database for enterprise-level data requirements. All data can be exported to CSV or XML for integration into other processes or further processing in applications such as MS Excel.



MULTIPLE I/O OPTIONS

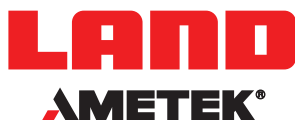
Connect and configure multiple I/O modules. Define Data Pairs on I/O modules and Modbus interface, based on trigger and in/out events.



SPOTVIEWER | SPOTPRO

SOFTWARE FEATURES

	SPOTVIEWER	SPOTPRO
Multi-lingual interface (10 languages)	✓	✓
Celsius/Fahrenheit/Kelvin	✓	✓
Light/Dark theme	✓	✓
Screenshot capturing	x	✓
Online help	✓	✓
User levels (password protected)	x	✓
Save/Load full configuration	x	✓
SPOT Pyrometer remote configuration	✓ (1)	✓
SPOT Actuator remote configuration	✓ (1)	✓
Multi-tab view	✓ (2)	✓
Free window swipe and configuration	✓	✓
Simple value display (configurable)	✓	✓
SPOT video camera stream	✓	✓
LED spot on/off	✓	✓
Extended instrument views	✓	✓
Value alarm visualisation	x	✓
Beep/sound on alarm	✓	✓
Temperature time trend graph	✓	✓
Online data view	✓	✓
Logged data view	✓	✓
Multivalue trend (selectable)	✓	✓
Zoom in/out function	✓	✓
CSV export from actual graph	✓	✓
SPOT Actuator scan graph	✓	✓
Control and change scan position	✓ (1)	✓
Start scan	✓	✓
Scan history (up to 6 scans)	✓	✓
Live grid	x	✓
Trigger	x	✓
Trigger on value	x	✓
Multiple trigger conditions	x	✓
Trigger time interval	x	✓
Pre-trigger interval	x	✓
Data logging	✓	✓
Logging on trigger event	x	✓
Logging on external trigger	x	✓
Data export	✓	✓
Data management (achieving/deleting)	✓	✓
I/O module status view	x	✓
Communications	x	✓
I/O modules (digital & analog)	x	✓
Modbus interface (server/client)	x	✓
Data pairing configuration	x	✓



CONTACT US



www.ametek-land.com



land.enquiry@ametech.com

