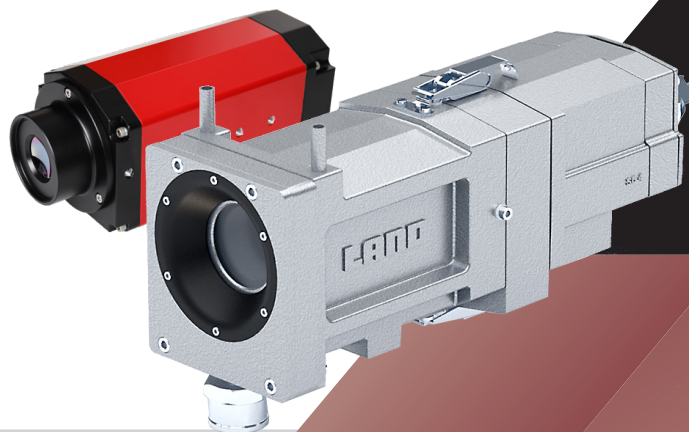
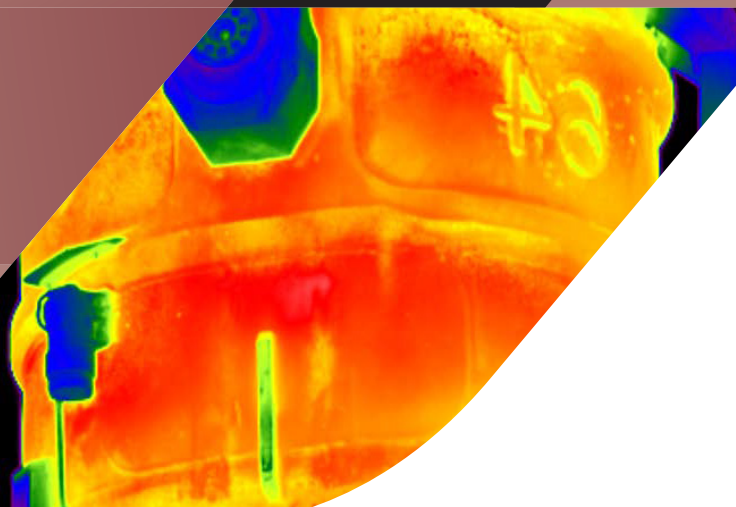


# LWIR-640 MWIR-640

MOUNTINGS AND  
ACCESSORIES



FOR ALL LWIR/MWIR THERMAL IMAGER MODELS



**LAND**  
**AMETEK**<sup>®</sup>



QUALITY CUSTOMER SOLUTIONS

# LWIR-640 & MWIR-640 MOUNTINGS & ACCESSORIES

The following mountings and accessories are available to support the integration of LWIR-640 and MWIR-640 systems within your manufacturing process. For specific recommendations on the choice of protective housings, mounting assemblies, water cooling, air purging, cabling requirements to suit your specific industry or installation, please contact an AMETEK Land sales manager or representative for further advice before ordering.

## INDUSTRIAL HOUSINGS AND MOUNTINGS

### INDUSTRIAL HOUSING

The industrial Housing assembly, is designed for harsh environmental conditions.

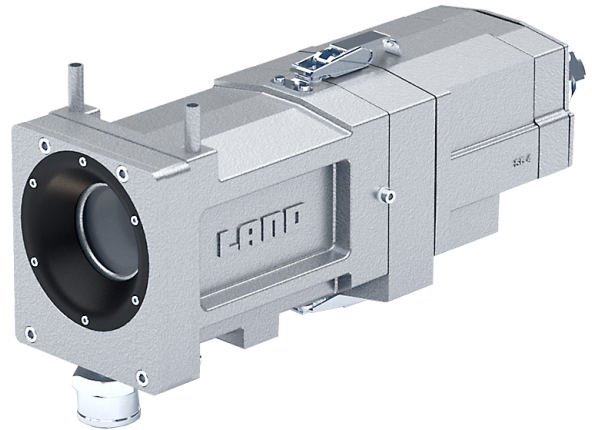
The integrated water cooling option enables the LWIR-640 & MWIR-640 camera system to be continuously used in hot industrial environments. The purge contains a sealing window and air purge optimised to minimize air flow while ensuring the window stays clean, even in very dusty environments.

**LWIR-640 PART NUMBER: 815120**

(Air Purge including Ge-Window)

**MWIR-640 PART NUMBER: 815859**

(Air Purge including Sapphire-Window)



## INDUSTRIAL MOUNTING ACCESSORIES

### INDUSTRIAL MOUNTING SPLASH PROTECTION PLATE

The Industrial Mounting Splash Protection Plate is an accessory for the Industrial Housing assembly that protects the camera optic from hot metal sparks. It is ideal for liquid metal tapping applications.

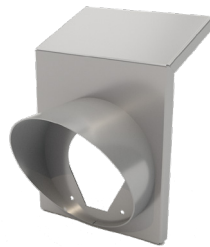
For use with cameras with:

Horizontal FOV 50° or 25°  
Plate with fixings

**PART NUMBER: 815545**

Horizontal FOV 12° or 6°  
Plate with fixings

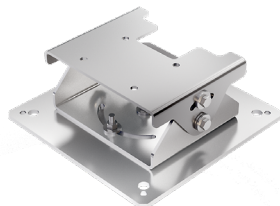
**PART NUMBER: 815203**



### INDUSTRIAL MOUNTING PAN AND TILT

The Industrial Mounting Pan and Tilt assembly is an optional accessory for the Industrial Housing assembly, to enable secure installation with vertical and horizontal alignment of the camera unit.

**PART NUMBER: 813472**



### LARGE BALL MOUNTING

Four mounting points offer permanent fixing to flat surfaces. A locking handle secures the mounting at the required orientation for accurate sighting.

For use with mounting adaptor  
(029.264)

**PART NUMBER: 030.566**



### MOUNTING ADAPTER (FOR LARGE BALL MOUNT)

For use when the ball mounting is used with the cooling jacket, this adaptor provides a stable plate to attach the jacket.

**PART NUMBER: 029.264**



## CAMERA ONLY MOUNTING

### PAN AND TILT BRACKET

The Pan and Tilt Bracket is designed for mounting camera only (without protective housings industrial or light)

**PART NUMBER: 806761**



## LIGHT HOUSINGS AND MOUNTINGS

### LIGHT HOUSING WITH PURGE

The Light Housing, with Purge provides basic weather protection for the camera. The kit includes a weather shield and a Germanium (Ge) view port window or Sapphire window depending on the imager.

The front of the housing contains a sealing window and air purge optimised to minimize air flow while ensuring the window stays clean even in the most dusty environmental conditions.

A pre-wired connection PCB is located inside the housing for connection.

LWIR-640 PART NUMBER: 815120  
MWIR-640 PART NUMBER: 815861



### WALL BRACKET

For installation of the Light Housing With Purge on to a solid wall or ceiling surface.

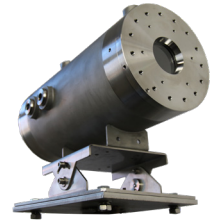
PART NUMBER: 809963



### EXSH1 - LWIR HOUSING

Hazardous area enclosure for the LWIR-640 thermal imager.

PLEASE REFER TO ADDITIONAL BROCHURES FOR INFORMATION ON THIS PRODUCT.



## POWER SUPPLIES

### THERMAL IMAGING PSU MODULE (UL APPROVED)\*

Industrial power supply unit including a 4 port Gb ethernet switch with additional fibre port (SFP required). PoE (Power over Ethernet) version also available. Sealed to IP65 specifically for harsh operating environments. Designed for one imager only.

PART NUMBER: 813478  
With PoE Switch PART NUMBER: 815177

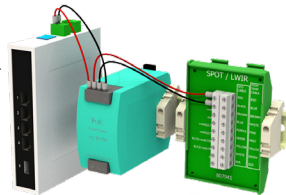


### DIN RAIL MOUNTED PoE SWITCH AND 24V PSU

AC input 24 Vdc power supply, PoE ethernet switch and cable interconnect block pre-assembled onto a din rail for installation into a cabinet or junction box.

PART NUMBER: 815180  
DIN Rail Mounted Switch, PSU and Interface Assembly

PART NUMBER: 802653  
Power supply only



### DESKTOP PoE POWER SUPPLY\*

Desktop PoE power supply for PoE driven thermal imagers. One power supply per camera is required.

PART NUMBER: 810573

PLEASE SEE ALL POWER SUPPLY OPTIONS ON THE BACK PAGE



## PCB

### INTERFACE PCB

Analog Interface PCB, DIN Rail mounting for connection of analog camera cables in switch cabinets.

PART NUMBER: 807942

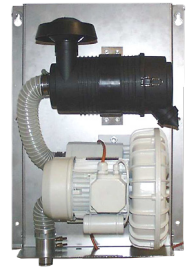


## BLOWER SYSTEMS

### BLOWER SYSTEMS WITH AIR PURGE

Blower Systems for industrial installations to provide continuous purging air flow.

PLEASE CONTACT AMETEK LAND FOR A CUSTOMISED CONFIGURATION WITH REQUIRED ACCESSORIES.



## CABLES

### POWER AND INTERFACE CABLES

Cables for Power, Ethernet (PoE) and Analog Camera Connections. Various length and options available.

PLEASE SEE CABLE OPTIONS ON THE BACK PAGE



\* For use with a maximum of one imager only

# LWIR-640 MWIR-640

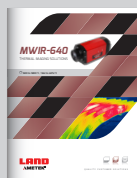
## MOUNTINGS AND ACCESSORIES

PART NAME	PART NUMBER
<b>POWER SUPPLIES</b>	
Thermal Imaging PSU Module (Moxa EDS-G205-1GTXSFP UL Approved)*	813478
Thermal Imaging PSU Module (Moxa EDS-G205A-4PoE-1GSFP-T UL Approved) PoE*	815177
DIN Rail Mounted Interface with PoE ( AC input 24Vdc PSU, PoE Ethernet Switch, Cable Interconnect )	815180
DIN Rail 24V ACDC Power Supply only	802653
Desktop PoE Power Supply*	810573
* For use with a maximum of one imager only	
<b>POWER/ I-O CABLES</b>	
Camera -> DIN Rail PSU/Connection PCB/Thermal Imaging PSU	
5 m Imager to Power Cable with 1x M16 Conn Standard Temperature	807950
20 m Imager to Power Cable with 1x M16 Conn Standard Temperature	807951
50 m Imager to Power Cable with 1x M16 Conn Standard Temperature	812353
10 m Imager to Power Cable with 1x M16 8 Way Conn High Temperature	813514
25 m Imager to Power Cable with 1x M16 8 Way Conn High Temperature	815071
50 m Imager to Power Cable with 1x M16 8 Way Conn High Temperature	814968
Process Imager PSU -> Connection PCB/Light Housing	
5 m Imager to Power Cable with 2x M12, 8 -Way Conn Standard Temperature	815154
20 m Imager to Power Cable with 2x M12, 8 -Way Conn Standard Temperature	815155
50 m Imager to Power Cable with 2x M12, 8 -Way Conn Standard Temperature	815156
<b>COMMUNICATIONS/ PoE CABLES</b>	
Camera -> Thermal Imaging PSU Only	
25 m M12 to M12, 8 -Way Communication Cable with 2x Conn High Temperature	810794
50 m M12 to M12, 8 -Way Communication Cable with 2x Conn High Temperature	810889
Camera -> RJ45 Ethernet Port (Thermal Imaging PSU/PC/Switch)	
5 m M12, 8 -Way to RJ45 Communication Cable with 2x Conn Standard Temperature	809294
20 m M12, 8 -Way to RJ45 Communication Cable with 2x Conn Standard Temperature	814616
50 m M12 to RJ45 Communication Cable with 2x Conn Standard Temperature	814617
M12F to RJ45M Adaptor Cable	815157

SEE OUR OTHER  
LITERATURE ON  
LWIR-640 THERMAL  
IMAGING SOLUTIONS:



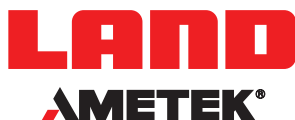
LWIR-640  
BROCHURE



MWIR-640  
BROCHURE

DISCOVER HOW OUR BROAD RANGE  
OF NON-CONTACT TEMPERATURE  
MEASUREMENT AND COMBUSTION  
& EMISSIONS PRODUCTS OFFER A  
SOLUTION FOR YOUR PROCESS

[WWW.AMETEK-LAND.COM](http://WWW.AMETEK-LAND.COM)



### CONTACT US



[www.ametek-land.com](http://www.ametek-land.com)



[land.enquiry@ametek.com](mailto:land.enquiry@ametek.com)



We are fully committed to Quality Assurance. See all our accreditations at [AMETEK-LAND.COM/QUALITY](http://AMETEK-LAND.COM/QUALITY)