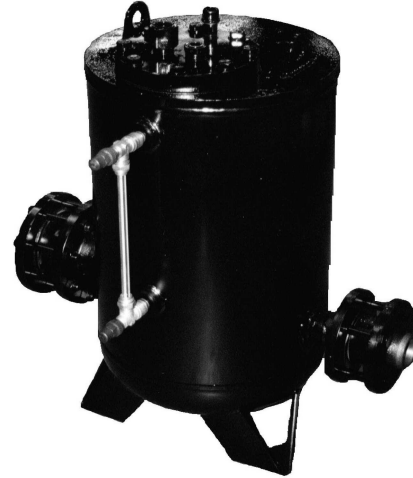
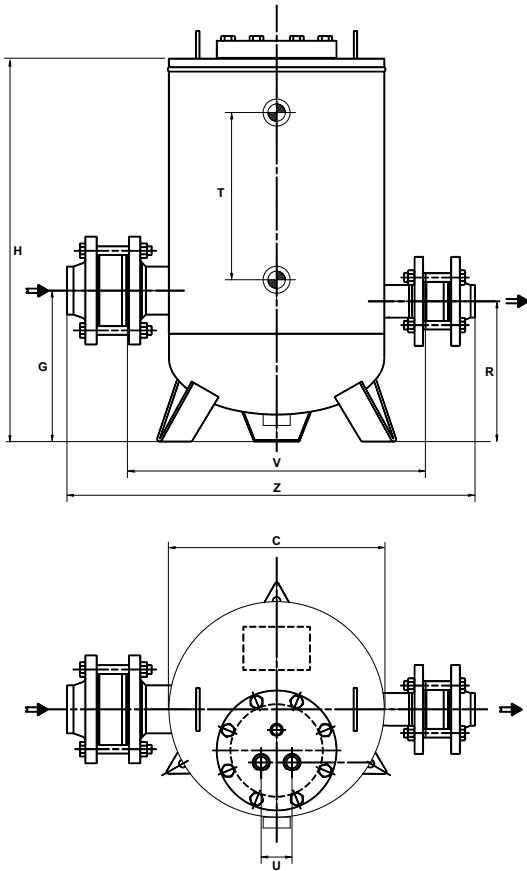




# EPT-400 Series Pumping Trap

Carbon Steel, In-Line Connections

For capacities up to 7 310 kg/h (steam motive)... Discharge per cycle 29 liters



Condensate Recovery Equipment

The Armstrong EPT-400 Series Vertical Pump Trap is the low maintenance, non-electric solution to move condensate or other liquids from low points, low pressures or vacuum spaces to an area of higher elevation or pressure. Condensate can be returned at temperatures well above the 99°C limit of conventional electric condensate pumps without the headaches of leaking seals or cavitation problems.

## Features

- Non-electric – Uses inexpensive steam, air or gas to operate the pump trap
- Explosion proof – Intrinsically safe
- AD-Merkblätter carbon steel or stainless steel body vessel
- Low maintenance – No leaking seals, impeller or motor problems
- All stainless steel internals with durable Inconel X-750 springs
- Externally removable/replaceable seats – Valve and seats can be replaced or cleaned without removing pump cap from body

| Table CRE-212-1. EPT-400 Pumping Trap Physical Data |         |         |         |         |
|---|---------|---------|---------|---------|
| Model Number  | EPT-404 | EPT-406 | EPT-408 | EPT-412 |
|   | mm      | mm      | mm      | mm      |
| "C" (diameter)                                      | 400     | 400     | 400     | 400     |
| "G"   | 260     | 260     | 260     | 260     |
| "H"   | 710     | 710     | 710     | 710     |
| "R"   | 240     | 240     | 240     | 240     |
| "T"   | 305     | 305     | 305     | 305     |
| "U"   | 57      | 57      | 57      | 57      |
| "V"   | 552     | 552     | 552     | 552     |
| "Z"   | 680     | 710     | 730     | 750     |
| Cap Removal   | 400     | 400     | 400     | 400     |
| Weight (kg)   | 67      | 71      | 75      | 88      |
| Number of Cap Bolts                                 | 8       | 8       | 8       | 8       |

Maximum Allowable Pressure (Vessel Design) 10 barg @ 250°C.

Maximum Operating Pressure 9 barg.

All models are CE Marked according to the PED (97/23/EC).

*All dimensions and weights are approximate. Use certified print for exact dimensions. Design and materials are subject to change without notice.*

# EPT-400 Series Pumping Trap

Carbon Steel, In-Line Connections

For capacities up to 7 310 kg/h (steam motive)... Discharge per cycle 29 liters



|                    | EPT-404   | EPT-406 | EPT-408 | EPT-412 |
|--------------------|-----------|---------|---------|---------|
| Inlet              | DN 25     | DN 40   | DN 50   | DN 80   |
| Inlet Check Valve  | DN 25     | DN 40   | DN 50   | DN 80   |
| Outlet             | DN 25     | DN 40   | DN 50   | DN 50   |
| Outlet Check Valve | DN 25     | DN 40   | DN 50   | DN 50   |
| Motive Valve       | 1/2" BSPT |         |         |         |
| Vent Valve         | 1" BSPT   |         |         |         |
| Body Drain         | 1/2" NPT  |         |         |         |
| Gauge Glass        | 1/2" BSPT |         |         |         |
| Cycle Counter      | 1/2" BSPT |         |         |         |

|                        |   |
|------------------------|---|
| Body and Cap           | Fabricated Steel P265GH/P275H<br>AD-Merkblätter |
| Cap Gasket             | Compressed Non-Asbestos                         |
| Bolts                  | SA - 193 gr B7                                  |
| Inlet Valve Assembly   | Stainless Steel                                 |
| Vent Valve Assembly    | Stainless Steel                                 |
| Valve Assembly Washers | Zinc-Plated Steel                               |
| Mechanism Assembly     | Cast Stainless Steel                            |
| Plug                   | Steel   |
| Springs                | Inconel X-750                                   |

| Motive Pressure | Total Lift or Back Pressure | EPT-404       |            | EPT-406       |            | EPT-408       |            | EPT-412       |            |
|-----------------|-----------------------------|---------------|------------|---------------|------------|---------------|------------|---------------|------------|
|                 |                             | DN 25 x DN 25 |            | DN 40 x DN 40 |            | DN 50 x DN 50 |            | DN 80 x DN 50 |            |
|                 |                             | Steam         | Air        | Steam         | Air        | Steam         | Air        | Steam         | Air        |
| bar             | bar                         | kg/h          | kg/h       | kg/h          | kg/h       | kg/h          | kg/h       | kg/h          | kg/h       |
| 1,0             | 0,35                        | 945           | 1 120      | 1 545         | 1 670      | 2 245         | 2 420      | 3 740         | 4 045      |
| 1,7             |                             | 1 250         | 1 320      | 2 290         | 2 430      | 3 295         | 3 495      | 5 490         | 5 815      |
| 3,5             |                             | 1 545         | 1 610      | 2 440         | 2 454      | 3 540         | 3 680      | 5 840         | 6 060      |
| 5,0             |                             | 1 695         | 1 750      | 2 595         | 2 645      | 3 590         | 3 695      | 5 990         | 6 160      |
| 7,0             |                             | 1 750         | On request | 2 695         | On request | 3 640         | On request | 6 040         | On request |
| 8,5             |                             | 1 800         | On request | 2 745         | On request | 3 695         | On request | 6 090         | On request |
| 1,7             | 1,0                         | 1 100         | 1 260      | 1 750         | 2 010      | 2 695         | 3 090      | 3 590         | 4 130      |
| 3,5             |                             | 1 300         | 1 400      | 2 045         | 2 210      | 3 145         | 3 395      | 5 190         | 5 615      |
| 5,0             |                             | 1 400         | 1 475      | 2 195         | 2 370      | 3 245         | 3 445      | 5 390         | 5 715      |
| 7,0             |                             | 1 545         | On request | 2 400         | On request | 3 345         | On request | 5 490         | On request |
| 8,5             |                             | 1 595         | On request | 2 440         | On request | 3 395         | On request | 5 590         | On request |
| 2,5             | 1,5                         | 1 000         | 1 170      | 1 445         | 1 710      | 2 095         | 2 470      | 3 445         | 4 070      |
| 3,5             |                             | 1 200         | 1 335      | 2 000         | 2 245      | 2 895         | 3 195      | 4 840         | 5 410      |
| 5,0             |                             | 1 300         | 1 400      | 2 145         | 2 270      | 2 990         | 3 245      | 4 990         | 5 440      |
| 7,0             |                             | 1 400         | On request | 2 345         | On request | 3 050         | On request | 5 090         | On request |
| 8,5             |                             | 1 450         | On request | 2 980         | On request | 3 195         | On request | 5 190         | On request |
| 3,5             | 3,0                         | 945           | 1 170      | 1 595         | 2 025      | 2 170         | 2 675      | 2 895         | 3 555      |
| 4,0             |                             | 1 100         | 1 300      | 1 800         | 2 125      | 2 545         | 3 000      | 3 445         | 4 070      |
| 5,0             |                             | 1 200         | 1 335      | 2 000         | 2 235      | 2 845         | 3 185      | 3 790         | 4 240      |
| 7,0             |                             | 1 250         | On request | 2 095         | On request | 2 990         | On request | 4 045         | On request |
| 8,5             |                             | 1 350         | On request | 2 245         | On request | 3 095         | On request | 4 240         | On request |
| 4,5             | 4,0                         | 900           | 1 200      | 1 595         | 2 145      | 1 900         | 2 520      | 2 500         | 3 315      |
| 5,0             |                             | 1 000         | 1 220      | 1 750         | 2 320      | 2 045         | 2 580      | 2 695         | 3 445      |
| 7,0             |                             | 1 360         | On request | 1 850         | On request | 2 245         | On request | 2 995         | On request |
| 8,5             |                             | 1 200         | On request | 1 900         | On request | 2 395         | On request | 3 195         | On request |

Notes: Above capacities are the results of actual steam testing using a minimum 93°C condensate. Published capacities are based on the use of external check valves supplied by Armstrong. Fill head measured from drain point to top of pump cap. Discharge per cycle: 29 liters.

| Model   | Filling Head (mm) |      |      |      |      |
|---------|-------------------|------|------|------|------|
|         | 0                 | 150  | 300  | 600  | 900  |
| EPT-404 | 0,70              | 0,85 | 1,00 | 1,30 | 1,40 |
| EPT-406 | 0,70              | 0,85 | 1,00 | 1,20 | 1,35 |
| EPT-408 | 0,70              | 0,70 | 1,00 | 1,20 | 1,35 |
| EPT-412 | 0,70              | 0,85 | 1,00 | 1,08 | 1,20 |

Note: Filling head is measured from drain of receiver to top of pump's cap.

## Options

- Stainless 316L Body and Cap
- Gauge Glass Assembly with Guards (Brass or Cadmium Plated Carbon Steel)
- Digital Cycle Counter (Open or Closed Systems; with or without Auxiliary contacts)
- Insulation Jacket

This pump might be suitable for special applications. Please consult factory

All dimensions and weights are approximate. Use certified print for exact dimensions. Design and materials are subject to change without notice.