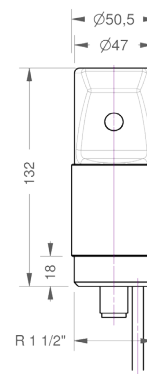


oxi::lyser™

oxi::lyser™ monitors dissolved oxygen & temperature

- s::can plug & measure
- measuring principle: optical / fluorescence
- multiparameter sensor
- ideal for surface water, ground water, drinking water and waste water
- long term stable and maintenance free in operation
- factory precalibrated
- automatic cleaning with compressed air
- mounting and measurement directly in the media (InSitu) or in a flow cell
- no flow necessary
- operation via s::can terminals & s::can software
- minimal maintenance (no consumables)



recommended accessories	
part number	article name
B-44	cleaning valve
B-44-2	
C-1-010-sensor	1 m connection cable for s::can physical and ISE probes
D-315-xxx	con::cube
D-319-xxx	con::lyte
F-45-oxi	flow cell for oxi::lyser™ and soli::lyser

technical specification

measuring principle	fluorescence	weight (min.)	540 g
measuring range application	0 ... 25 mg/l O ₂	dimensions (Ø x l)	50.5 mm x 132 mm
resolution	0.01 mg/l O ₂	operating temperature	0 ... 60 °C
accuracy (standard solution)	O ₂ : +/- 0.02 mg/l or +/- 1 %* (*whichever is greater)	storage temperature	0 ... 60 °C
response time	60 ... 0 sec.	operating pressure	0 ... 6.8 bar
reference standard	saturated sodium sulfite solution	installation / mounting	submersed or in a flow cell
integrated temperature sensor	0 ... 50 °C	process connection	R 1 1/2"
resolution temperature sensor	0.2 °C	pH range	2 ... 10
integration via	con::cube con::lyte con::nect	ingress protection class	IP68
power supply	6 ... 16 VDC	automatic cleaning	media: compressed air permissible pressure: 2 ... 4.5 bar air volume: 5 ... 10 l per cleaning duration: 2 ... 10 sec. per cleaning cleaning interval: depending on application
power consumption (max.)	0.32 W	conformity - EMC	EN 50081-2, EN55011
interface to s::can terminals	sys plug (IP67), RS485	conformity - safety	EN 61000-4, EN61010-1
cable length	10 m	extended warranty (optional)	3 years
housing material	CPVC, stainless steel, epoxy		

surface water

		concentration ranges and sensor/probe type for this application		
		O ₂ [mg/l]	temperature [°C]	part number
oxi::lyser (O ₂ , temp)	min.	0	0	E-501-075
	max.	25	50	

drinking water

		concentration ranges and sensor/probe type for this application		
		O ₂ [mg/l]	temperature [°C]	part number
oxi::lyser (O ₂ , temp)	min.	0	0	E-501-075
	max.	25	50	